

## L-12G How to Rewrite Firmware (for SD card) ver.3

### ○Overview

Describes how to rewrite the FW with an SD card.

#### ※Caution

The SD cards that can be used here are up to the ones said as SD(-2GB) or SDHC(4GB-32GB). SDXC(64GB-) is out of specification so can't be used.

### ○Process

- ① After unplugging the power cable, save the FW file (\*\*.fex) and ulmage file in the root directory of an SD card (Fig.1).

Insert it into the slot on the side of L-12G (Fig. 2).

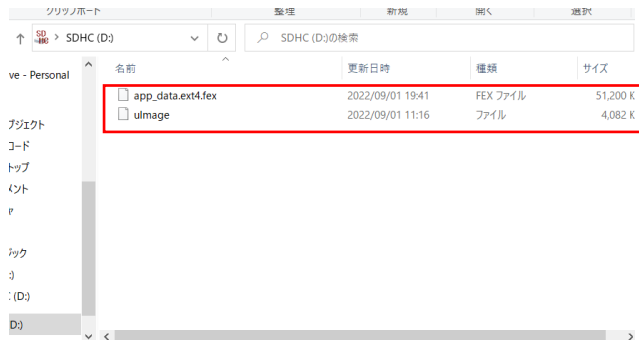


Fig.1



Fig.2

②Connect the power cable (Fig.3) and wait until the power LED turns to standby mode (red light)(Fig.4).



Fig.3



Fig.4

③Press the "Enter" button and "Brightness +" button at the same time in standby mode, and release them when the LED goes out (Fig.5).

It lights purple and the FW is rewritten if there is no problem.

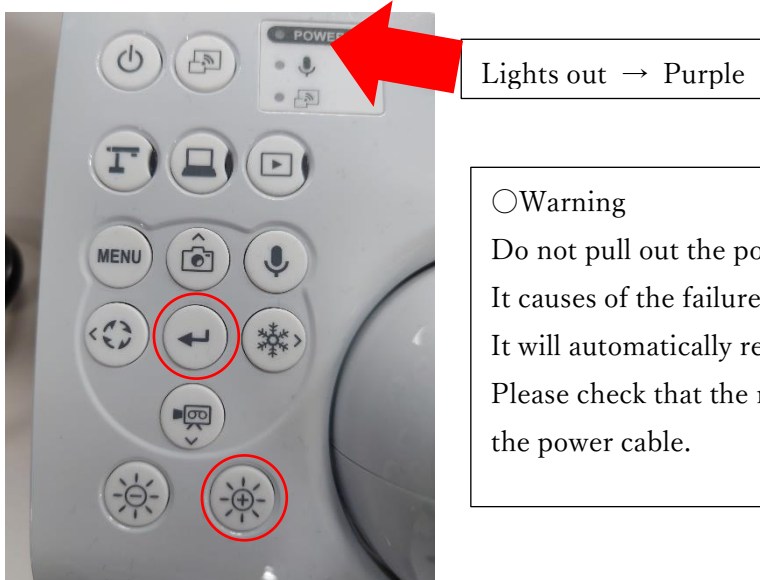


Fig.5

Lights out → Purple

○Warning  
Do not pull out the power cable during rewriting.  
It causes of the failure.  
It will automatically restart after rewriting is completed.  
Please check that the rewriting is finished before touching  
the power cable.

④After restarting, you can check the FW version(Fig.6) in the Camera Information of the camera mode menu.

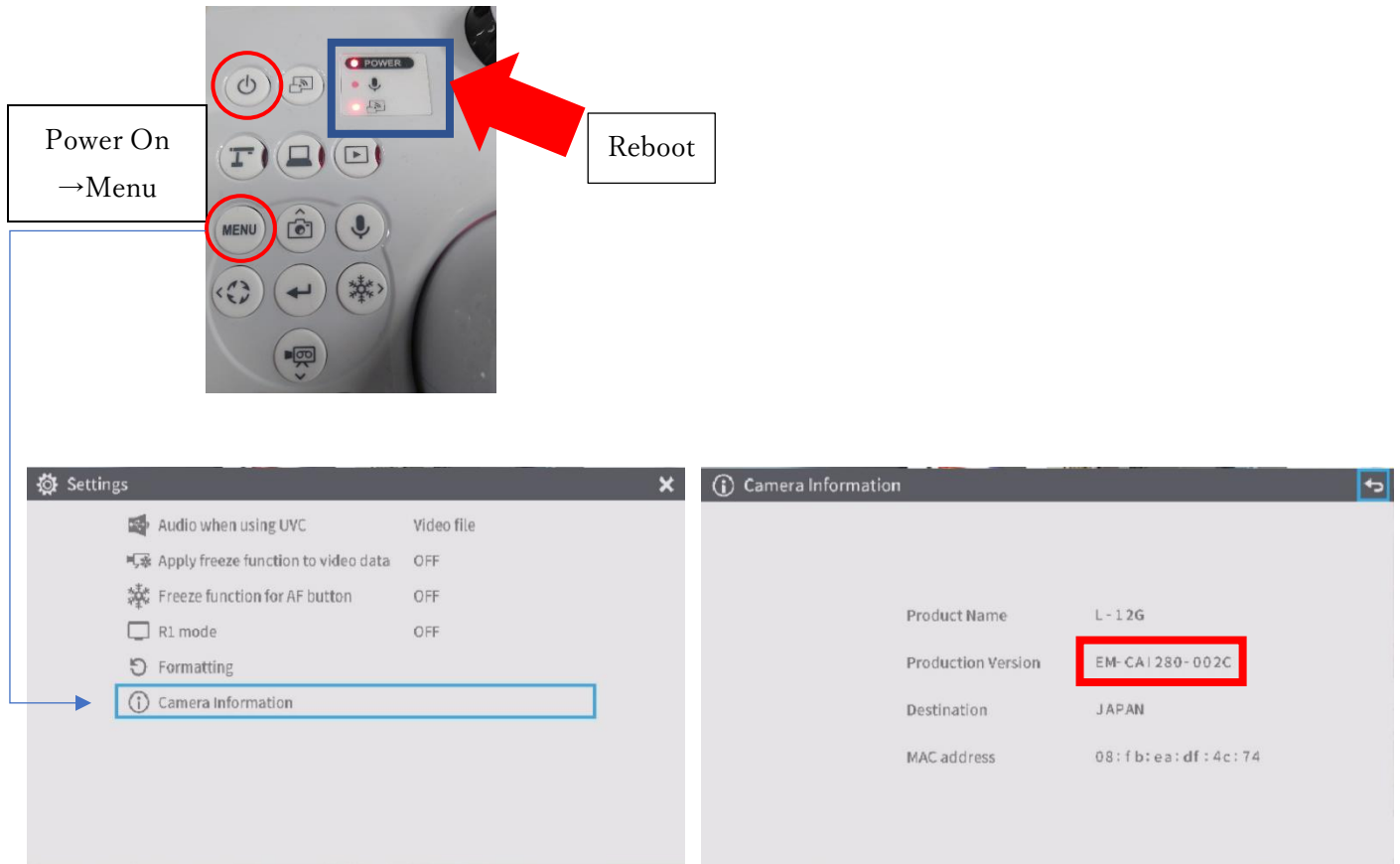


Fig.6