

L-12i Interactive Visualiser

High Quality, Clear & Smooth images



Powerful 96 X zoom



Full HD 1080p



30 fps smooth images

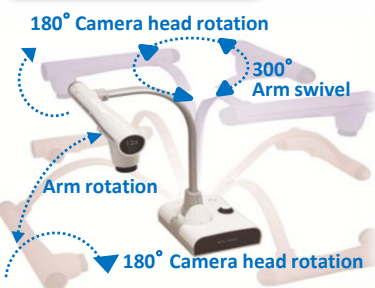
A3 Capture Area

3.4 MP CMOS Sensor

Built-in Microphone

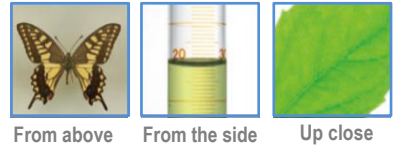
Web-Cam Feature

300° Swivel



Adjustable Free-Angle Camera Head & Arm

The L-12i can capture images from all directions. The solid camera arm holds its position and is easily operated by both left- and right handed users.



Web Cam Feature

"NEW on L-12i"

The new L-12i supports **UVC (USB Video class)** for easy integration with your interactive whiteboard and video conferencing software!



ELMO Wireless Tablet

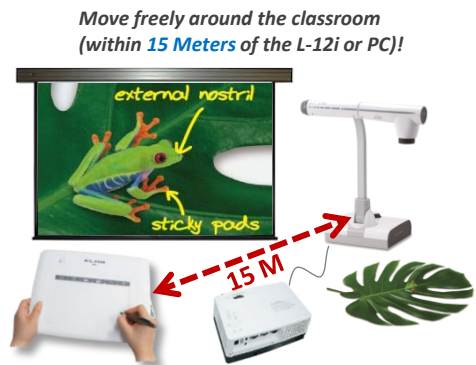
Annotate on live images remotely!

Partner the L-12i with the ELMO CRA-1 Wireless Tablet. You can **annotate over live images**, as well as **saved images**. Record and play back videos remotely!

WITHOUT a computer...
Plug the USB receiver directly into the L-12i for plug & play! Annotate over live images, as well as saved images. Record and play back videos remotely all without a computer!



WITH a computer...
Plug the USB receiver into the PC or Mac. Get advanced teaching material creation features with the provided Image Mate Accent software.



Move freely around the classroom (within 15 Meters of the L-12i or PC!)

Presentation Support Tools



The provided **remote control** brings convenient interactive functions to classroom presentations!

Split Screen



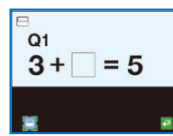
Show a still image and a live image simultaneously.

Highlight



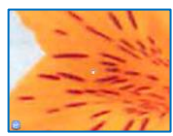
Draw attention to a particular section of an image.

Mask



Hide a selected part of an image from view

Scroll



Move and digitally magnify the image instantly

Save Presentations on External Memories

Both still images (jpg) and audio video files (mp4) can be saved on a **USB memory** or **SD memory card** for future use. Files may also be saved to a computer using Image Mate software (included).



L-12i Specifications

Camera

Image pick-up device	1/2.8" CMOS 3,400,000 pixels
Total pixels	2,144(H) x 1,588(V)
Effective pixels	1,920(H) x 1,536(V)
Frame rate	30fps
Resolution	Analogue RGB :800(H) x 800(V)TV lines or more Video output : 500(H)TV lines or more

Optics

Zoom	Powered, 12x optical
Lens	F3.2-3.6, f=4.0mm-48.0mm
Shooting area	1080p : Max.420x233mm Min.48.5x27.5mm 720p : Max.420x233mm Min.48.5x27.5mm SXGA : Max.420x334mm Min.48.5x38.5mm WXGA : Max.420x259mm Min.48.5x30.5mm XGA : Max.420x313mm Min.48.5x36.5mm
Focus	Auto/Manual/Zoom Sync

Functions

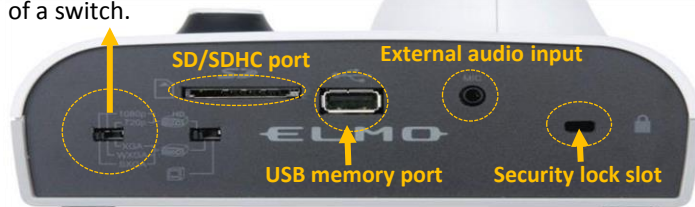
White balance	Auto/One-Push/Manual
Image mode	Text1/Text2/Text3/Graphics1/Graphics2
Edge enhancement	Provided (only for graphics mode)
Pause	Provided
Still image storage	Provided
Video storage	Provided
USB image output	Provided(Elmo original , UVC(USB Video Class))
Digital zoom	8x
Gamma setting	Provided (only for graphics mode)
Graphical OSD(on-screen display)	Provided
Image save	SD memory card/SDHC memory card/USB flash drive
State presetting	Up to 3 user settings
Annotation	Provided(CRA-1 use , CRB-1 use)
Brightness control	Auto(with level adjustment)/Manual
Support Functions	Highlight, Mask, Scroll(in digital zoom), Mosaic Split screen, PinP(Picture-in-Picture) Colour filter, Microscope, Image rotation(0°/180°) Positive/negative conversion, Colour/B&W selection

Rear Panel



Selectable Output Resolution

The L-12i offers a variety of output resolutions with a simple flip of a switch.



Audio Input & Output

Record high-quality video with audio via the built-in microphone or an external microphone input.



Interface

Input selection	Main/External
Output terminals	RGB output mini D-sub 15-pin connector, female x1 Composite video output RCA pin jack/75Ω unbalanced x1 HDMI output terminal x1 Line Out terminal 3.5mm-diameter stereo minijack x1
Input terminals	RGB input mini D-sub 15-pin connector, female x1 Mic In/Line Out terminal (shared), 3.5mm-diameter stereo mini jack x1
Ext. control terminal	USB device (2.0 compliant) Mini-B receptacle x1
Analogue RGB output	1080p : 1,920x1,080@60Hz, 720p : 1,280x720@60Hz SXGA:1,280x1,024@60Hz, WXGA:1,280x800@60Hz XGA:1,024x768@60Hz
HDMI output	Image output : 1080p/720p Audio output : PCM44.1kHz sampling frequency
Video output selection switch	Provided (NTSC/PAL)
Memory interface	SD memory card slot x1, USB host(2.0 compliant) Type A receptacle x1

Lighting

Illumination lamp	White LED
-------------------	-----------

Others

Accessories	AC adapter, AC cord, RGB cable, USB cable(for connecting to PC), Remote control, AAA batteries(for remote control), Image Mate CD-ROM, Image Mate installation manual, Instruction manual(CD-ROM), Basic startup guide, Warranty
Security slot	Provided
Power source	12V DC(AC adapter AC100-240V)
Power consumption	16.2W
Dimensions (WxDxH)	355x373.5x426.5mm setup 195x294x469mm folded
Weight	Approx. 3.2kg (main unit only)

Option

Microscope Attachment Lens



L-12i Stage



ELMO Europe SAS

www.elmoeurope.com

E-Mail: info@elmoeurope.fr



Like us on
ELMOEurope



Subscribe on
ELMO Europe



Follow us on
ELMOEurope

Distributed by

Headquarters

Immeuble Elysées La Défense
7C Place du Dome, 92056
Paris La Défense, France
TEL: +33 (0)1 73 02 67 03
FAX: +33(0)1 73 02 67 10

German Branch

Hansaallee 201, Haus 1
40549 Dusseldorf, Germany
TEL: +49 (0)211 544756 40
FAX: +49 (0)211 544756 60
E-mail: info@elmo-germany.de

UK CONTACT

UK Sales and Marketing Manger
Gary Trotter
Mobile: +44 (0)7794-365349
E-mail: garytrotter@elmoeurope.fr