

Wireless Sender



Interactive Pen



Sensor Bar

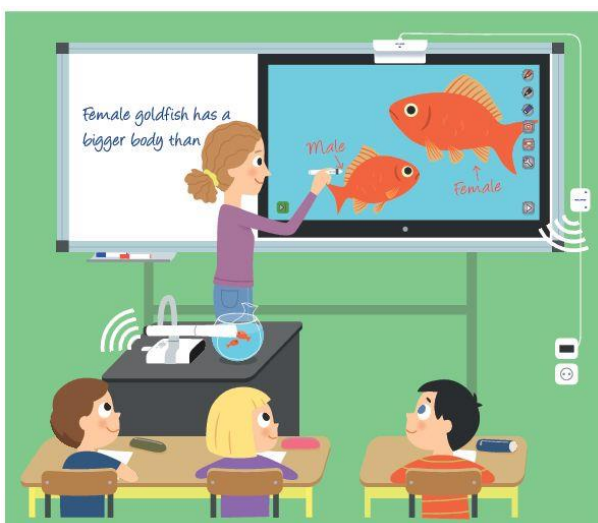
KEY FEATURES

- Weighing only 140g
- 15m wireless communication
- PC-Free feature
- Include: Interactive Pen, Sensor Bar, Wireless Sender

CRB-1 Wireless Interactive Pen

Give Instructions Immediately!

The ELMO Interactive Pen is the **FIRST PC-free interactive system*** which allows you to add instructions, create teaching contents just like a simple interactive whiteboard and doesn't require any software. ** When use with the ELMO interactive visualisers*



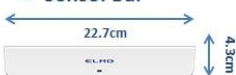
EASY SET-UP

Simply attach the CRB-1's sensor bar to a TV monitor or a projector screen and you are ready for interactive teaching experience. The whole system is managed via a wireless receiver(dongle) for "plug & Play".

COST-EFFECTIVE INTERACTIVITY

Make your classroom interactive without buying costly electronic whiteboards or new touch application TV screen. ELMO mobile IWB can turn your existing projector, TV screen into an interactive solution in a second!

● Sensor Bar



● Wireless Sender



● Interactive Pen



PRESENTATION ON-THE-GO!

The whole solution weighs only **140g** (Sensor bar: 75g, Interactive Pen: 34g, Wireless Sender: 26g) and size as small as a TV remote control, the CRB-1 mobile IWB is ideal for your presentation on the go!

SPECIFICATIONS

CRB-1 Interactive Pen

INTERACTIVE PEN

DIMENSIONS	152 x 25 (mm)
WEIGHT	34g (Battery is not included)
POWER	AA battery
BATTERY LIFE	Approx. 2,000 hours
AUTO POWER-OFF TIME	150 seconds

SENSOR BAR CRB-1S

WORKING AREA	Whiteboard: 1,800 x 1,200 mm (Ratio 4:3 approx. 79 inch) LCD monitor: 1,450 x 850 mm (Ration 16:9 approx. 64 inch)
POSITIONAL ACCURACY	1 mm
TRACKING FREQUENCY	60 rps
OPERATION TEMPERATURE	10°C-40°C
DIMENSION	227 x 43 x 11 (mm)
WEIGHT	75 g
POWER	USB
POWER CONSUMPTION	0.5W
CONTINUOUS OPERATION TIME	Approx. 16 hours
SOFTWARE PROVIDED	ELMO Interactive Toolbox

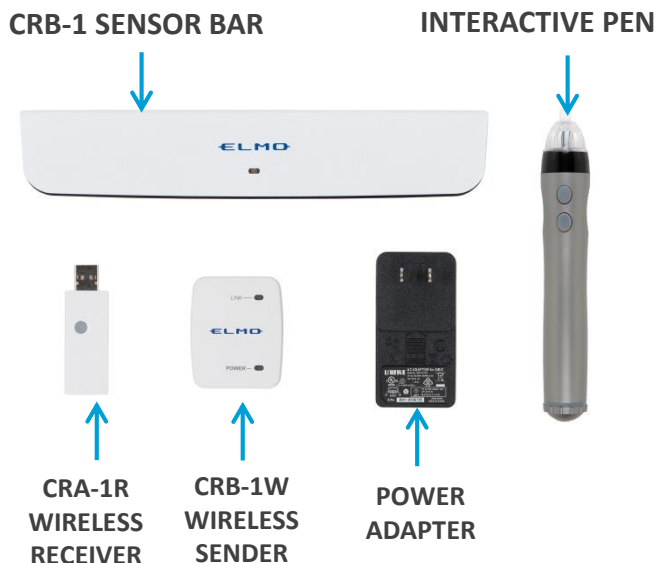
WIRELESS SENDER CRB-1W

DIMENSION	53 x 44 x 25.2 (mm)
WEIGHT	26 g
WIRELESS BAND	2.4GHz
OPERATION TEMPERATURE	0°C-40°C
WIRELESS COMMUNICATION DISTANCE	About 15 m
POWER CONSUMPTION	Maximum 5.0V 60mA
POWER SOURCE	DC 5V

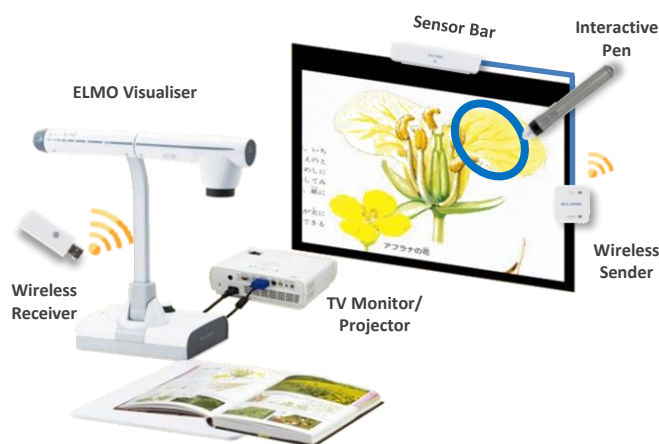
WIRELESS RECEIVER CRA-1R

OPERATION TEMPERATURE	0°C-40°C
WIRELESS BAND	2.4GHz
POWER SOURCE	USB Bus power
POWER CONSUMPTION	Maximum 5.0V 50mA
DIMENSIONS	64 x 22 x 10 mm
WEIGHT	11g

● CRB-1 Bundled Items



● CRB-1 System Configuration (PC-Free)



EIT- ELMO Interactive Toolbox Software

EIT	Operation System	CPU	Memory	Hard Disc	Display resolutions	USB
	Windows, Mac OS, iOS	Intel Core2 Duo 2GHz or above	2GB or above	min. 1GB	1024 x 768 above	USB 2.0 Hi-speed

EIT(ELMO Interactive Toolbox Software) is a complimentary software for the ELMO visualiser & classroom solutions



Like us on
ELMOEurope



Subscribe on
ELMO Europe



Follow us on
ELMOEurope

www.elmoeurope.com | info@elmo-germany.de

HEAD OFFICE

Tour Voltaire
1 Place des Degrés
92800 Puteaux
FRANCE

TEL : +33(0)1 74 54 49 81

GERMAN BRANCH

Monschauerstr. 1
40549 Düsseldorf
GERMANY

TEL : +49 (0) 211 544756 40

