

Great Benefits for Teachers

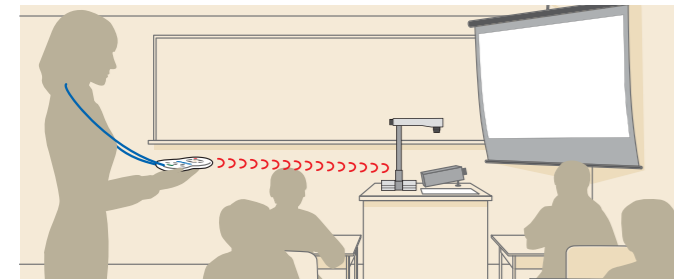
Easy to Use

Plug-in, switch-on and go!

Operating the L-1ex is very easy. Connect the L-1ex to a projector or digital TV and just switch on! Now you are ready to turn many objects around you into your teaching materials. Of course you are free to move around your classroom, because the remote control comes with the neck strap and is always with you.

The simple control panel and graphical menu are also designed for ease of use.

Even the least ICT confident teachers find the L-1ex so easy to use!



Enlarging Small Objects

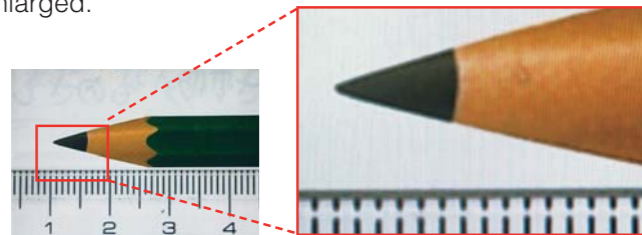
Powerful zooming and crisp image!

The L-1ex has a powerful 5.2x optical zoom with 8x digital zoom. You can enlarge any small objects, enabling the whole-class to observe. The zoom dial and one-push Auto Focus button make the zoom operation simple.

Thanks to Elmo's advanced imaging technologies, students can enjoy crisp and natural color images even after being enlarged.



Enjoy the Natural color and Beauty of the L-1ex.

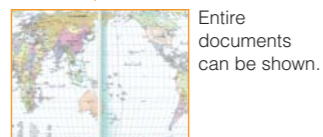


Enlarged images remain sharp.

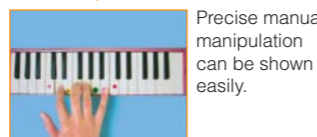
Large Capture Area

Entire large material can be shown!

There are many occasions that teachers need to show large objects such as a map or demonstrate how to play a musical instrument. The specially designed lens allows the L-1ex to capture up to a full A3 spread.



Entire documents can be shown.



Precise manual manipulation can be shown easily.

L-1ex Specifications

Model	L-1ex
Camera	Image pick-up device 1/3" CMOS, 1,490,000 pixels Total pixels (H) 1384 x (V) 1076 Effective pixels (H) 1329 x (V) 1049 Frame rate Max. 30 frames/sec. Resolution Analog RGB output : (H) 800 x (V) 800 TV lines or more Video output : (H) 500TV lines or more
Optics	Zoom Powered, 5.2x Optical Lens F2.8-3.2 f=3.85mm - 20.02mm Shooting area SXGA : Max. 417x331mm Min. 92x74mm WXGA : Max. 417x246mm Min. 92x56mm XGA : Max. 417x309mm Min. 92x69mm
Functions	Focus Auto/Manual White balance Full auto/One-push/Manual Negative/positive conversion Provided Image mode Text1/Text2/Text3/Graphics1/Graphics2 Edge enhancement Provided Color/ B&W selection Provided Freeze Provided Digital zoom 8x Gamma setting Provided Graphical OSD (On Screen Display) Provided Slide show Provided (SD image data) Image save Provided (SD card) Image rotation Provided (0°/180°) State presetting Up to 4 user settings Annotation Provided (on PC screen) Brightness control Auto (W/Level adjustment)/Manual Zoom Sync. Focus Provided Microscope mode Provided Scroll Provided (in digital zoom) Mask function Provided PinP (Picture-in-Picture) Provided Highlight function Provided
Interface	Input selection Main/External Analog RGB output SXGA : 1280x1024 @60Hz WXGA : 1280x800 @60Hz XGA : 1024x768 @60Hz VIDEO output Provided (C-Video) RGB input Provided (x1) Recorder terminal Provided (for optional desktop recorder) USB port Provided (USB2.0 x1) SD card slot Provided (x1)
Lighting	Illumination lamp Provided (White LED)
Others	Accessories AC adapter, Power cord, Analog RGB cable (2m), Removable stage, Magnetic sheet, Anti-glare sheet, Dust cover, Instruction manual, IR remote control, USB cable (1.8m), Utility software (Image Mate) CD-ROM, Microscope attachment, Strap for IR remote control, TWAIN DS driver Security slot Provided Power source 12VDC (AC adapter AC100 - 240V) Power consumption 15W (AC adapter included) Dimensions (W x D x H) mm 195x254.5x444.5mm (Folded) 350x370.5x411.5mm (Set Up) Weight Approx. 2.9kg

Design and specifications are subject to change without prior notice. The images on this brochure are simulated.

"ELMO" is a trademark or registered trademark of ELMO COMPANY, LIMITED.

Other brand names and product names may be trademarks or registered trademarks of their respective owners.

ELMO's Helping to Provide a Greener Future for Our Children

The ELMO products comply with RoHS Directive 2002/95/EC (Restriction Of the use of certain Hazardous Substances in electronic equipment). This compliance helps to ensure a healthier and greener environment for all our children.



ELMO CO., LTD. is one of the sponsors for Japan Committee for the World's Children (JCV).



ELMO CO., LTD. (Head Office and Factory's) QMS/EMS has been registered to ISO 9001 & 14001 : 2004.

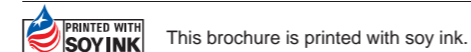


ELMO CO., LTD.
6-14, Meizen-cho, Mizuho-ku
Nagoya, 467-8567, Japan
E-mail : overseassales@elmo.co.jp

London Branch
Crown House, 72
Hammersmith Road, London
W14 8TH, U.K.
Tel. (0207) 559 1388
Fax. (0207) 559 1389

Taipei Office
Room 902, 9F, No.1-7 Sec. 5
Zhongqiao E. Road, Xinyi District
Taipei City, 110 Taiwan (R.O.C.)
Tel. 886 (2) 2528 3807
Fax. 886 (2) 2528 3817

ELMO (Europe) G.m.b.H.
Neanderstr 18,
40233 Dusseldorf, Germany
Tel. (0211) 396470
Fax. (0211) 376630
E-mail : info@elmoeurope.com
Web : <http://www.elmoeurope.com>



Printed in Japan (ST) 08/2009



Display Large & Share the Moment in Whole Class!



L-1ex

Document Camera

Teacher's Choice



Ideal Tool for Great Education. Both Teachers and Kids will Love It!

Is it hard to keep students paying attention to what teachers say? Do teachers have no time to prepare good teaching materials? Then the L-1ex is the simple solution!



What the L-1ex can do?

Showing 2D/3D & still/moving objects in large scale for sharing it in whole class. Its great flexibility can turn so many objects into good teaching materials, which can save teachers' time to prepare for each class. Moreover, the L-1ex can provide all students with fun time to learn!

- Any part of a text book can be enlarged for clearer understanding.
- Single teaching resource can be shared with everyone in the class. No need to prepare teaching material for every students.
- Easily added to your lesson. Supports teachers to enhance their own teaching methodologies.

Basic Function L-1ex × Projector or Digital TV

Free-Angle Camera Head & Arm gives you great flexibility.

The camera head and arm moves flexibly. You can show the emphasized point from free angle to cultivate the intelligibility more. The position can be easily adjusted by one hand. The well-built mechanism can hold the image position without vibration.



Its robust design makes the L-1ex the ideal tool to be used everyday in the classroom.

30fps Full Motion for smooth moving images.



The standard PAL TV system runs at 25fps (frame per second). If this number is above 25, human eyes recognize it as "normal video". The L-1ex can capture image at the max. of 30fps which makes the moving image extremely natural.



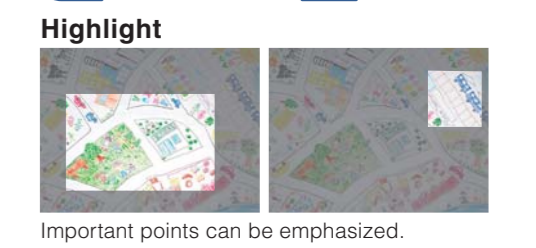
Capture lively movements.

Remote Control makes the lesson fun.

With this ergonomic remote control, the lesson becomes more enjoyable. The unique design infra-red receiver receives the signal from up to 7m distance, enabling you to control the L-1ex from anywhere in the classroom.



Highlight & Mask



Important points can be emphasized.

Mask

Q1	Q1
1 + □ = 4	1 + □ = 4
	Ans. 3

Specific areas can be hidden using the screenshade.

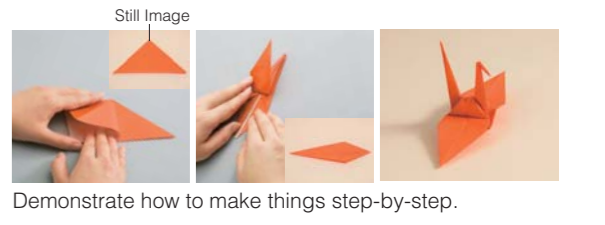


Zoom & Scroll

Image can be enlarged and scrolled.

PinP

A still image can be displayed as a small picture while displaying a live image.



Advanced Function L-1ex × Other Tools

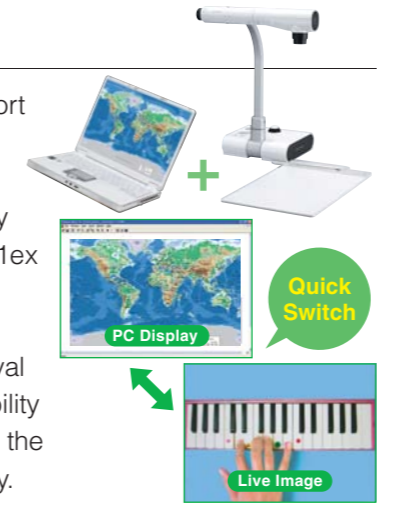
SD Card

Outcomes of students' work or artwork can be saved on an SD card. Saved photos can be used in the next lessons. Photos taken by a digital camera can be shown. The L-1ex supports SDHC.



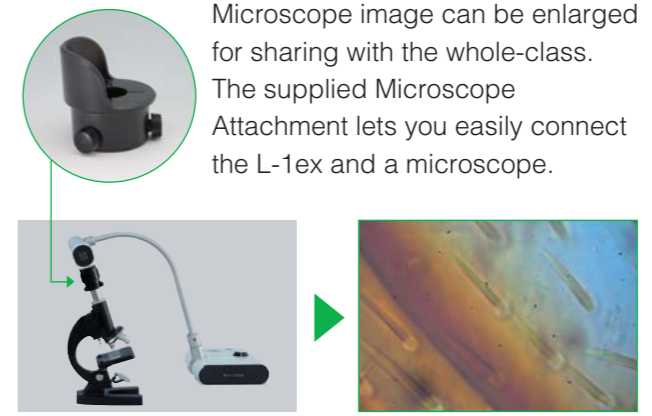
PC

The L-1ex is equipped with a USB port for easy connection with a PC. The accompanying Image Mate software lets you easily monitor or capture any image on your PC and control the L-1ex from a PC. With this software, you can record movies with audio simply. Also, interval recording function gives you a possibility to create a time-delay movie, such as the conversion of a cocoon into a butterfly.



Microscope

Microscope image can be enlarged for sharing with the whole-class. The supplied Microscope Attachment lets you easily connect the L-1ex and a microscope.



Interactive Whiteboard

The L-1ex can be easily integrated to the existing Interactive Whiteboard system, making the lesson more attractive. Real-time images captured by the L-1ex can be displayed onto an Interactive Whiteboard for enhanced interactive lessons.

